



GEOMETRO

GEOMETRO

Recycled Glass Mosaic

- Our GEOMETRO Recycled Glass collection provides a contemporary style that features innovative geometric patterns in a trendy color palette, which are key to the modern look.
- Offered in a Matte finish, GEOMETRO incorporates nostalgic micro recycled glass shapes into mosaic patterns echoing a distinct time and place.
- Constructed from 98% pre-consumer recycled glass, and 2% enamel, these tiles are set on a backing made of 96% pre-consumer materials, both mesh and adhesive.
- They are lead-free, non-toxic, and produce no VOC emissions.
- It's tinted with stable natural minerals and enamel, ensuring the color remains true and does not fade or discolor.
- NSR curated collection offers seventeen original stock patterns in various color blends, and five solid hexagon and four solid squares.
-
- NSR special-order program spans to 129 striking colors, and 60 shapes in both matte and polish finishes. Find your inspiration on a picture, fabric swatch, or a magazine cut-out.
- Geometro recycled glass collection is suitable for commercial and residential projects, interior and exterior, floors and walls, and a completely submerged pool application.

PYTHON

MATERIAL
RECTIFIED RECYCLED GLASS

FINISH
MATTE

DIMENSIONS
12-1/8" X 12-1/4"

SF/SHEET
1.03

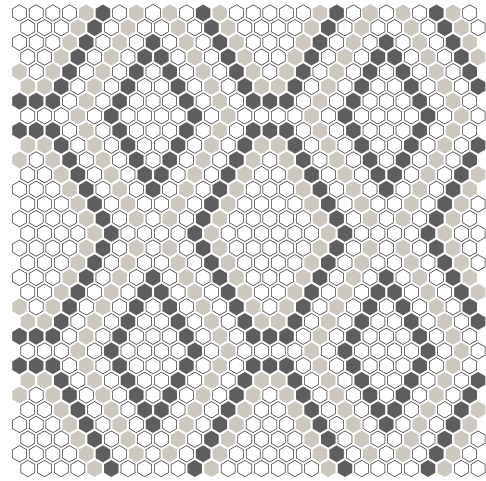
SF/CASE
10.30

CASE QUANTITY
10 PCS

PC SIZE



3/8"



HYDRA PYTHON



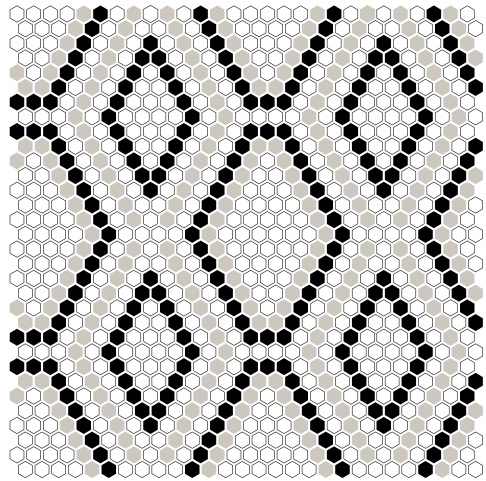
CHALK



ASH



GRAPHITE



DRACO PYTHON



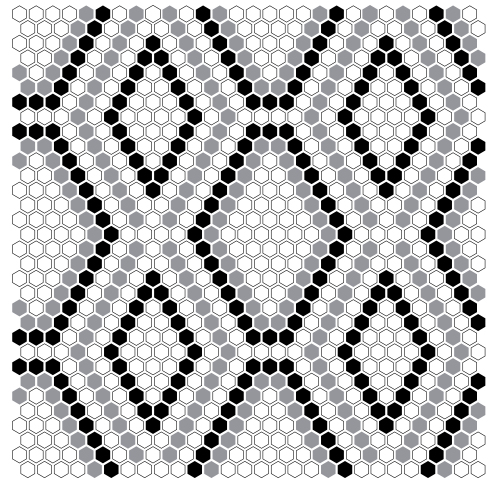
CHALK



ASH



RAVEN



HOPI PYTHON



CHALK



STEEL



RAVEN



HIGHLAND

MATERIAL
RECTIFIED RECYCLED GLASS

FINISH
MATTE

DIMENSIONS
15" X 15"

SF/SHEET
1.56

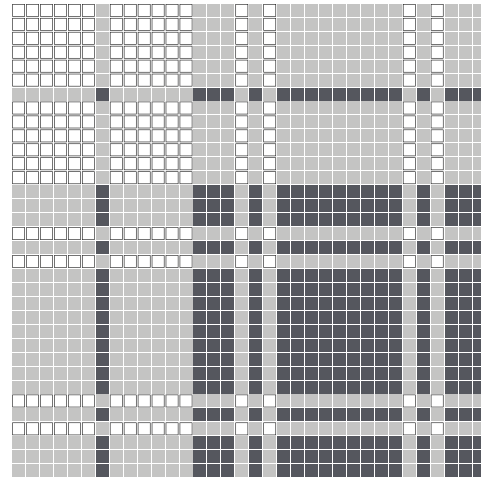
SF/CASE
15.60

CASE QUANTITY
10 PCS

PC SIZE



3/8"



HIGHLAND BRISTOL



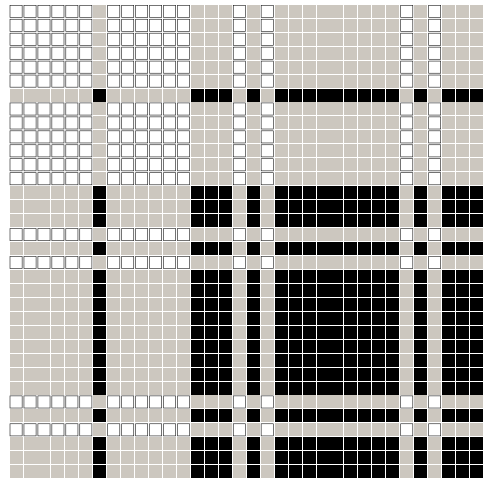
CHALK



FROST



SHADOW



HIGHLAND PRESTON



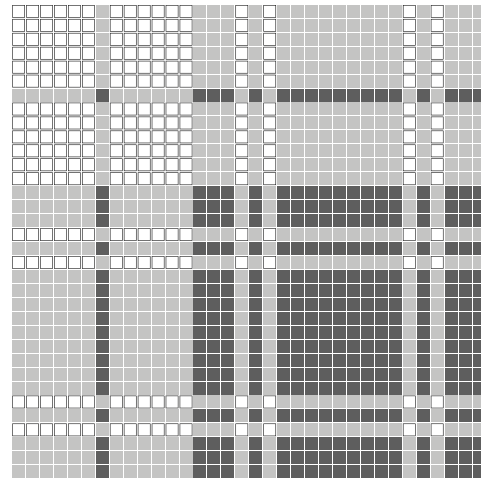
CHALK



ASH



RAVEN



HIGHLAND LANCASTER



CHALK



FROST



GRAPHITE



MISSONI

MATERIAL
RECTIFIED RECYCLED GLASS

FINISH
MATTE

DIMENSIONS
9-1/8" X 10-1/2"

SF/SHEET
0.67

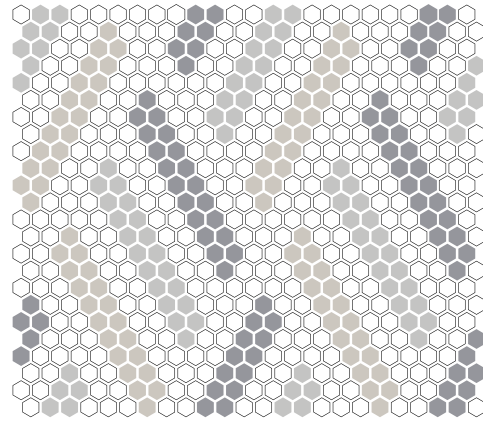
SF/CASE
6.70

CASE QUANTITY
10 PCS

PC SIZE



3/8"



RETRO MISSONI



CHALK



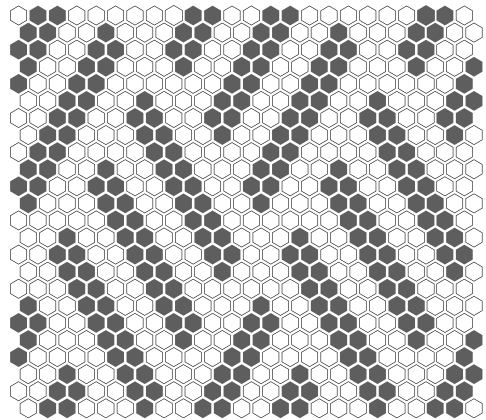
FROST



ASH



STEEL



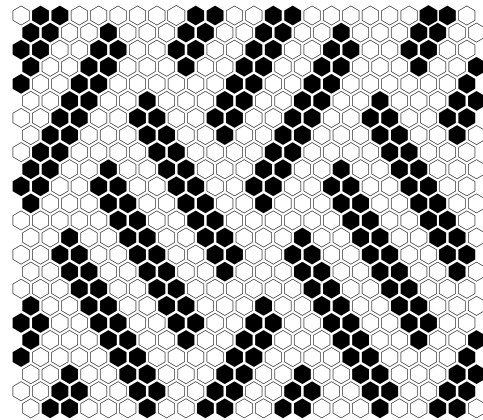
ZIP MISSONI



CHALK



GRAPHITE



VINTAGE MISSONI



CHALK



RAVEN



HYGGE

MATERIAL
RECTIFIED RECYCLED GLASS

FINISH
MATTE

DIMENSIONS
7-7/8" X 13-3/4"

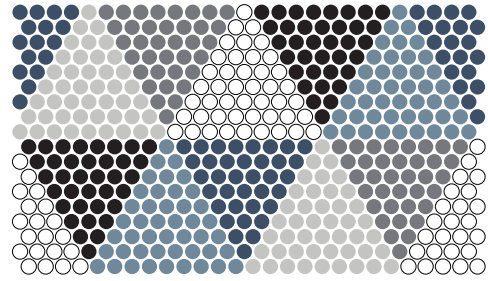
SF/SHEET
0.75

SF/CASE
7.50

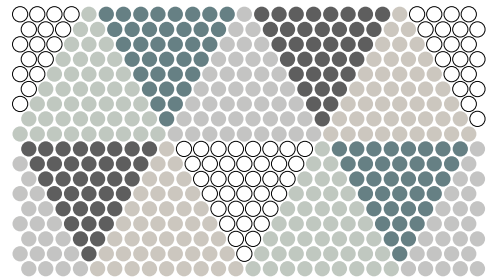
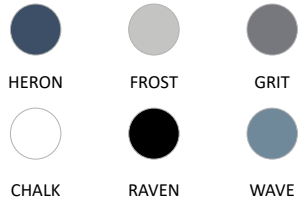
CASE QUANTITY
10 PCS

PC SIZE

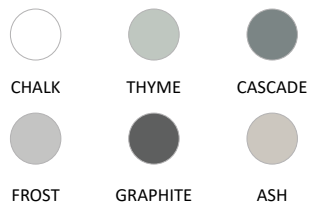
1/2"



HYGGE GLOW



HYGGE LOG



BARCODE

MATERIAL
RECTIFIED RECYCLED GLASS

FINISH
MATTE

DIMENSIONS
11-3/4" X 12"

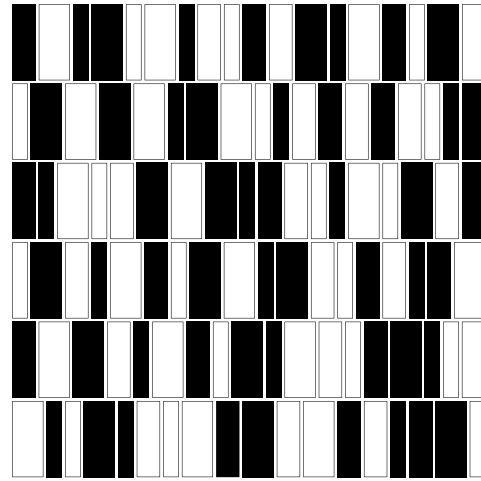
SF/SHEET
0.98

SF/CASE
9.80

CASE QUANTITY
10 PCS

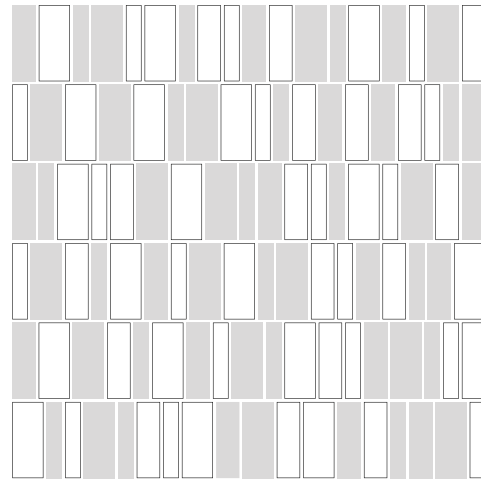
PC SIZE


1/2" 9/16" 3/4"



BARCODE CRYPTO

 
CHALK RAVEN



BARCODE PUZZLE

 
CHALK ICE



AMIENS

MATERIAL
RECYCLED GLASS

FINISH
MATTE

DIMENSIONS
11-3/8" X 13-3/4"

SF/SHEET
1.09

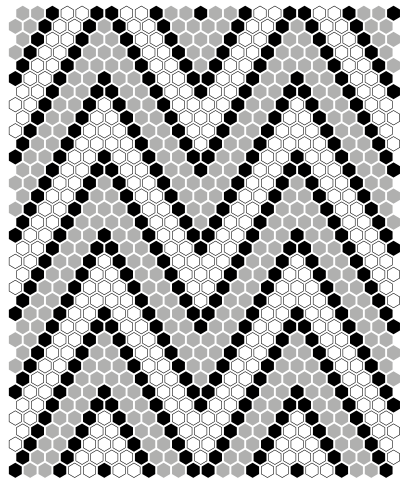
SF/CASE
7.63

CASE QUANTITY
7 PCS

PC SIZE



3/8"



CLASSIC AMIENS



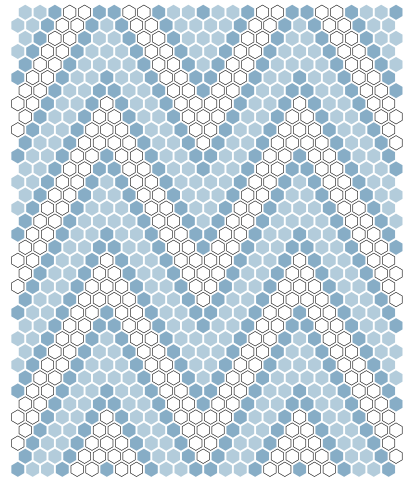
CLOUD



SMOKE



FLINT



COASTAL AMIENS



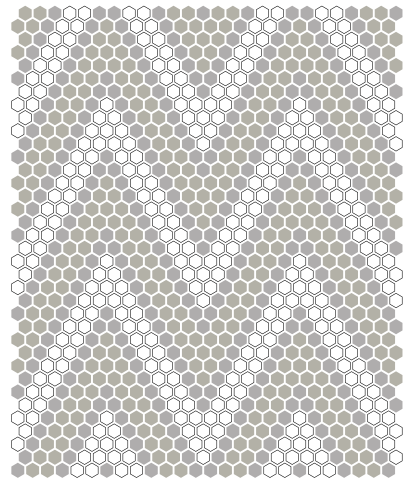
CLOUD



GLACIER



ATMOSPHERE



COUNTRY AMIENS



CLOUD



SMOKE



FLAXEN



BAYEUX

MATERIAL
RECYCLED GLASS

FINISH
MATTE

DIMENSIONS
10-3/8" X 13-1/2"

SF/SHEET
0.97

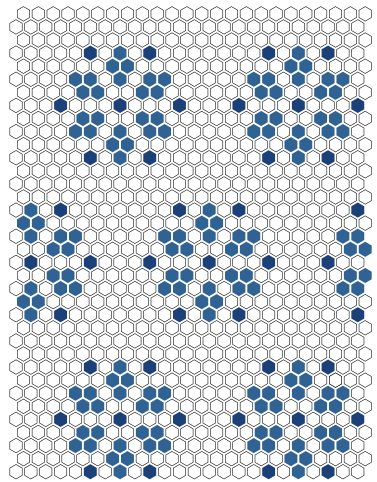
SF/CASE
6.79

CASE QUANTITY
7 PCS

PC SIZE



3/8"



COASTAL BAYEUX



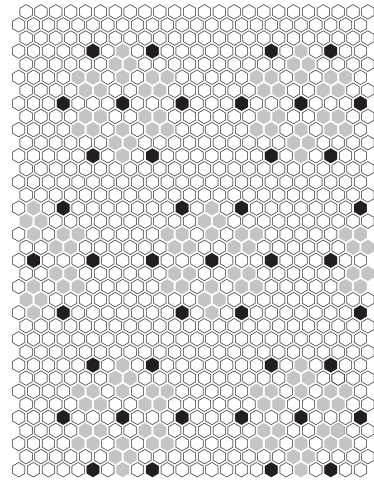
CLOUD



SHORE



DUSK



CLASSIC BAYEUX



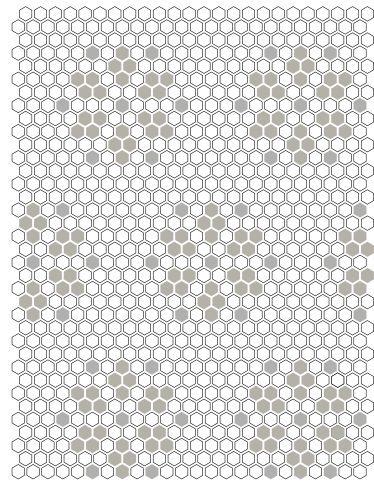
CLOUD



SMOKE



FLINT



COUNTRY BAYEUX



CLOUD



SMOKE



FLAXEN



BELFORT

MATERIAL
RECYCLED GLASS

FINISH
MATTE

DIMENSIONS
10-3/4" X 14"

SF/SHEET
1.05

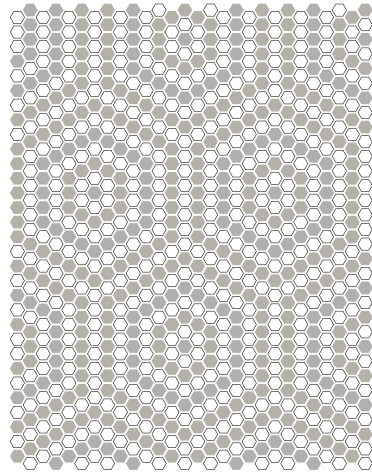
SF/CASE
7.35

CASE QUANTITY
7 PCS

PC SIZE



3/8"



COUNTRY BELFORT



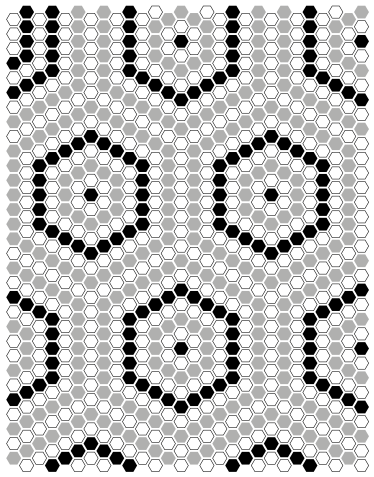
CLOUD



SMOKE



FLAXEN



CLASSIC BELFORT



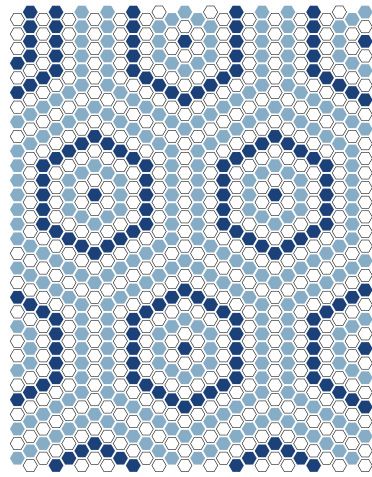
CLOUD



SMOKE



FLINT



COASTAL BELFORT



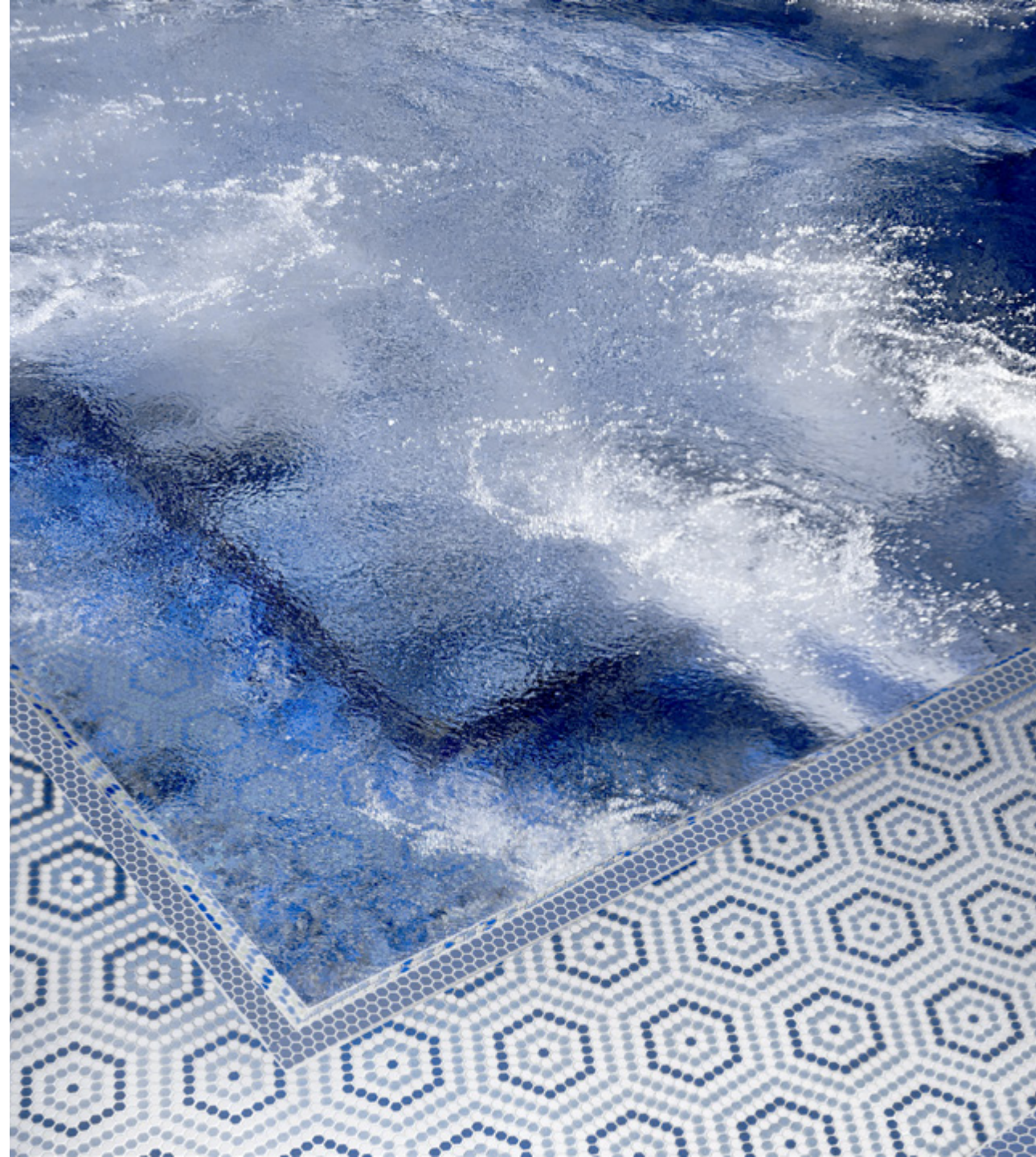
CLOUD



ATMOSPHERE



DUSK



BOURGES

MATERIAL
RECYCLED GLASS

FINISH
MATTE

DIMENSIONS
11-13/16" X 13-3/4"

SF/SHEET
1.13

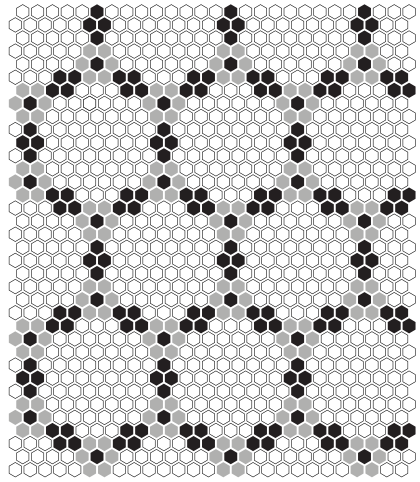
SF/CASE
7.91

CASE QUANTITY
7 PCS

PC SIZE



3/8"



CLASSIC BOURGES



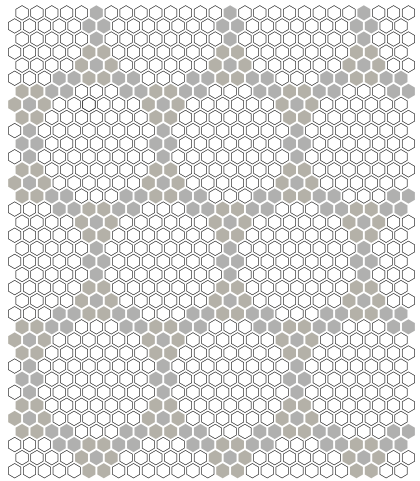
CLOUD



SMOKE



FLINT



COUNTRY BOURGES



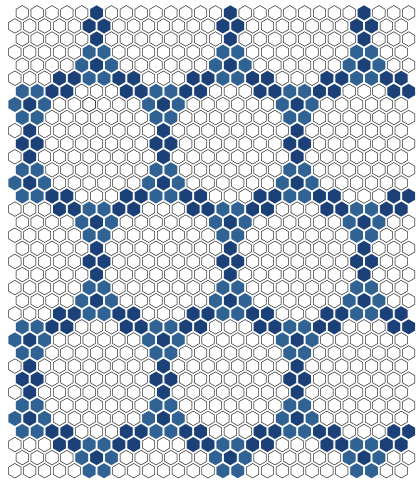
CLOUD



SMOKE



FLAXEN



COASTAL BOURGES



CLOUD



SHORE



DUSK



DIJON

MATERIAL
RECYCLED GLASS

FINISH
MATTE

DIMENSIONS
12-3/16" X 13-5/16"

SF/SHEET
1.13

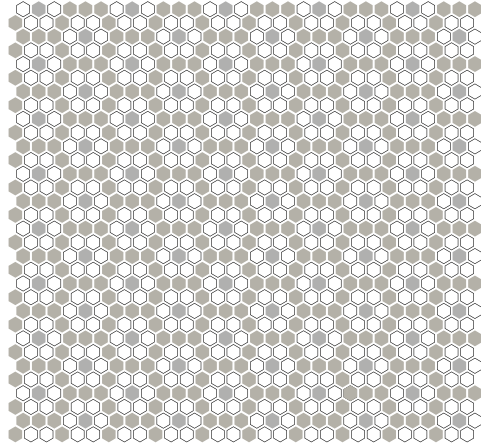
SF/CASE
7.91

CASE QUANTITY
7 PCS

PC SIZE



3/8"



COUNTRY DIJON



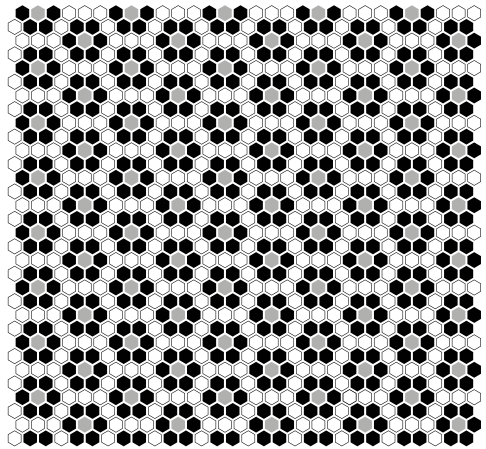
CLOUD



SMOKE



FLAXEN



CLASSIC DIJON



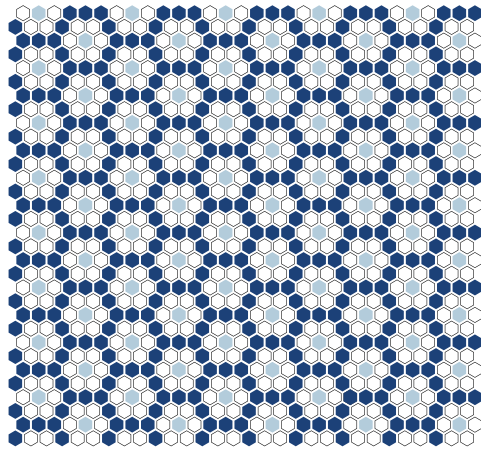
CLOUD



SMOKE



FLINT



COASTAL DIJON



CLOUD



GLACIER



DUSK



TULLE

MATERIAL
RECYCLED GLASS

FINISH
MATTE

DIMENSIONS
11-7/16" X 11-13/16"

SF/SHEET
0.94

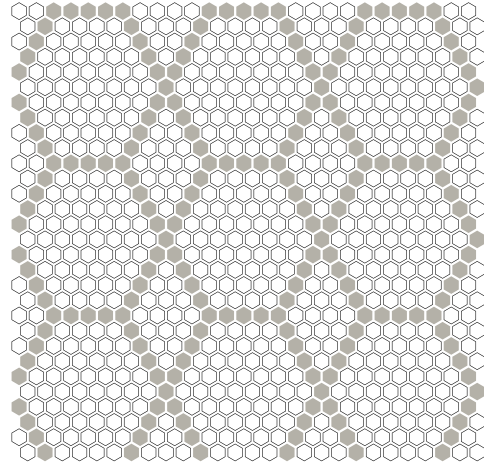
SF/CASE
6.58

CASE QUANTITY
7 PCS

PC SIZE



3/8"



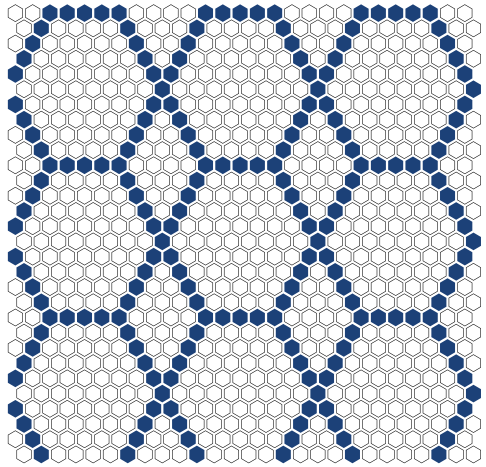
COUNTRY TULLE



CLOUD



FLAXEN



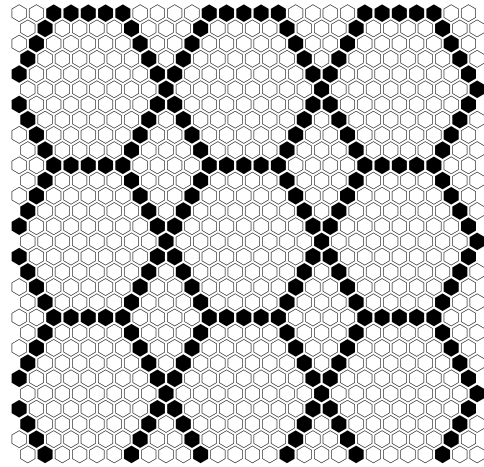
COASTAL TULLE



CLOUD



DUSK



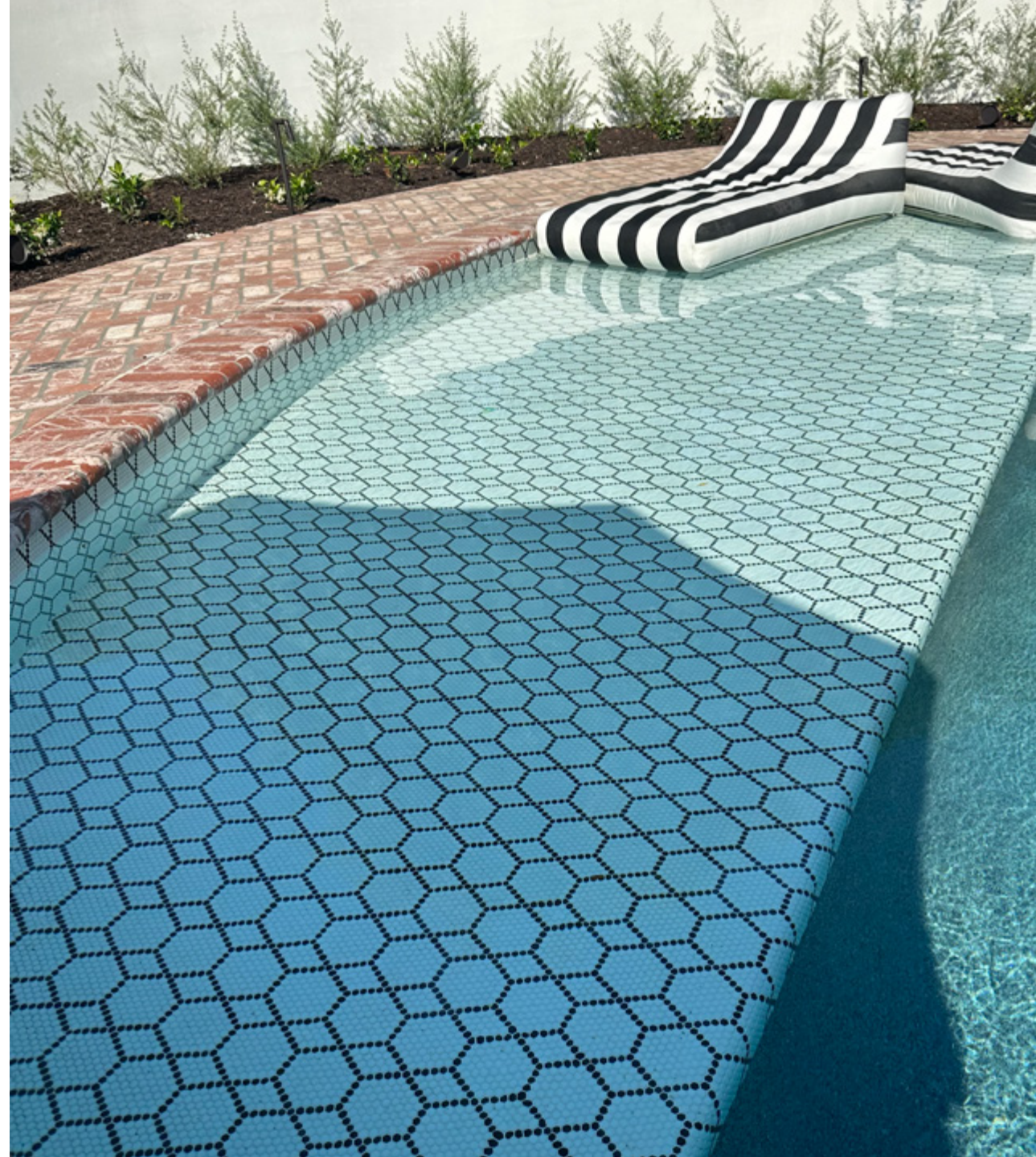
CLASSIC TULLE



CLOUD



FLINT



SOLID SQUARE

MATERIAL
RECTIFIED RECYCLED GLASS

FINISH
MATTE

SF/SHEET
1.00

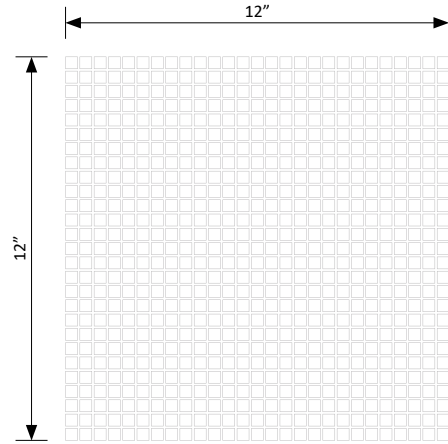
SF/CASE
10.00

CASE QUANTITY
10 PCS

PC SIZE



3/8"



SOLID HEXAGON

MATERIAL
RECYCLED GLASS

FINISH
MATTE

SF/SHEET
1.01

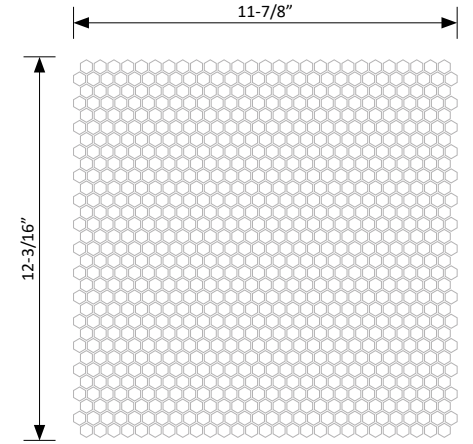
SF/CASE
7.07

CASE QUANTITY
7 PCS

PC SIZE



3/8"



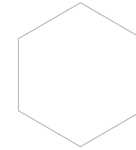
CHALK

FROST



GRAPHITE

RAVEN



CLOUD



FLAXEN



SMOKE



DUSK

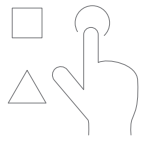


FLINT

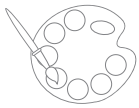


CUSTOM GLASS MOSAIC

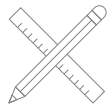
Bring your design ideas and creativity to life. Geometro recycled glass offers a rich and trendy color palette with more than one hundred colors to choose from, sixty different shapes, in two finishes, Matte and Polished.



SELECT SHAPE(S)



SELECT COLOR(S)



SPECIFY DESIGN

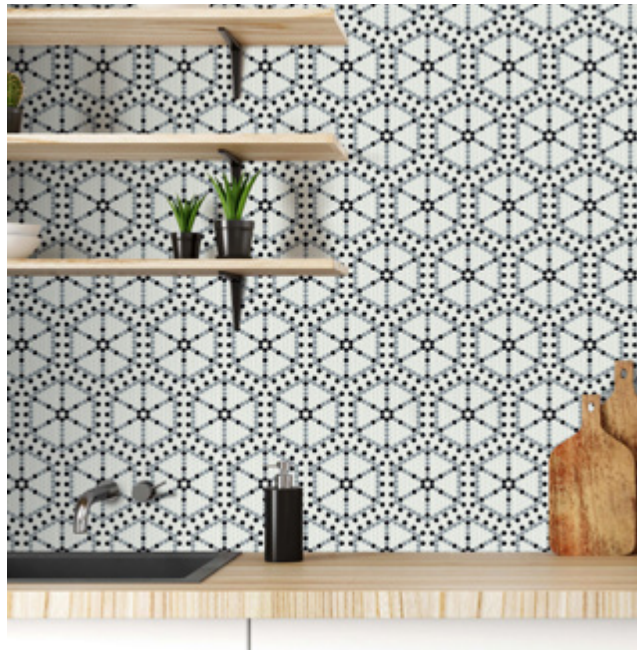


REVIEW DESIGN



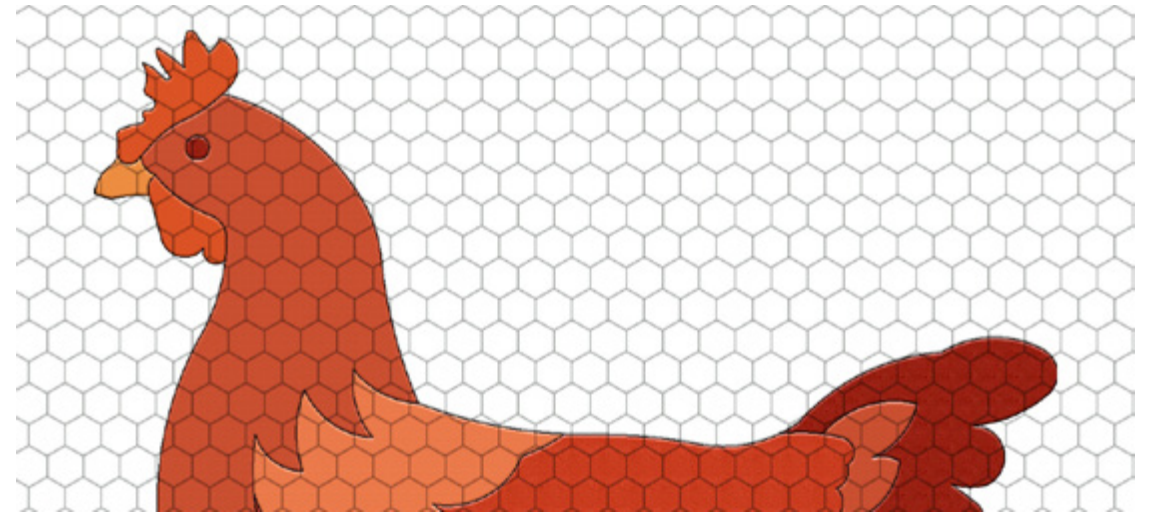
SUBMIT DESIGN

Submit your order(s) to csr@nsrstone.com for price and lead time. NSR offers a curated selection of glass mosaics, but if in need of something with a personal touch, our customer service team will assist brainstorming your project from start to finish.



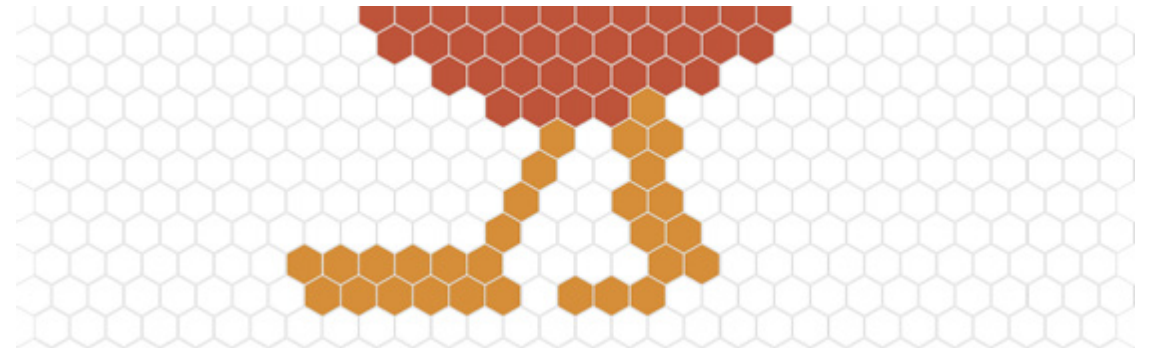
ARTISTIC MOSAIC

A Mosaic is an artistic technique that uses tiny parts to create a whole image or object. Mosaics are usually assembled using small tiles that can be randomly shaped to fit the design intent.

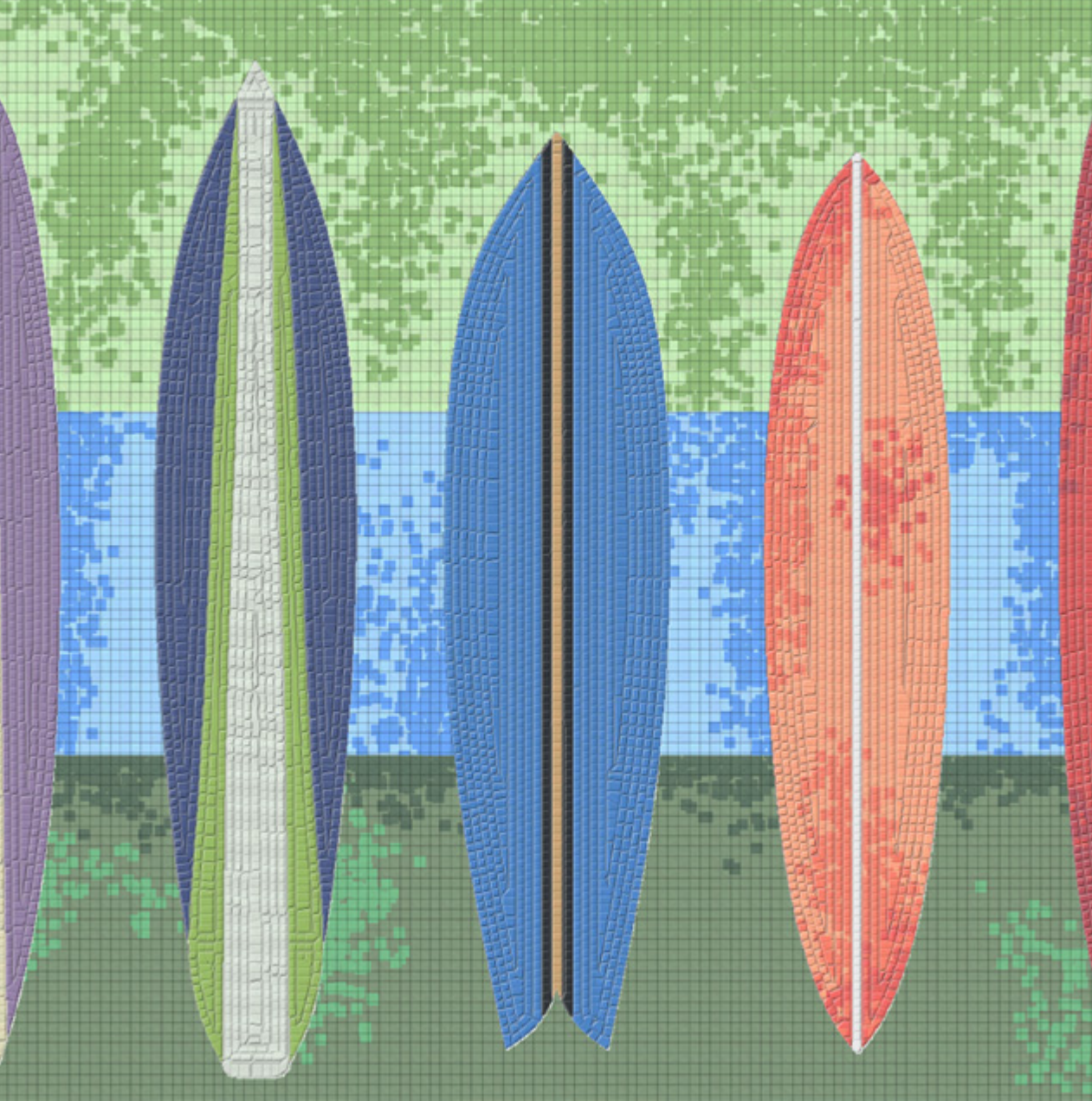


PIXEL ART

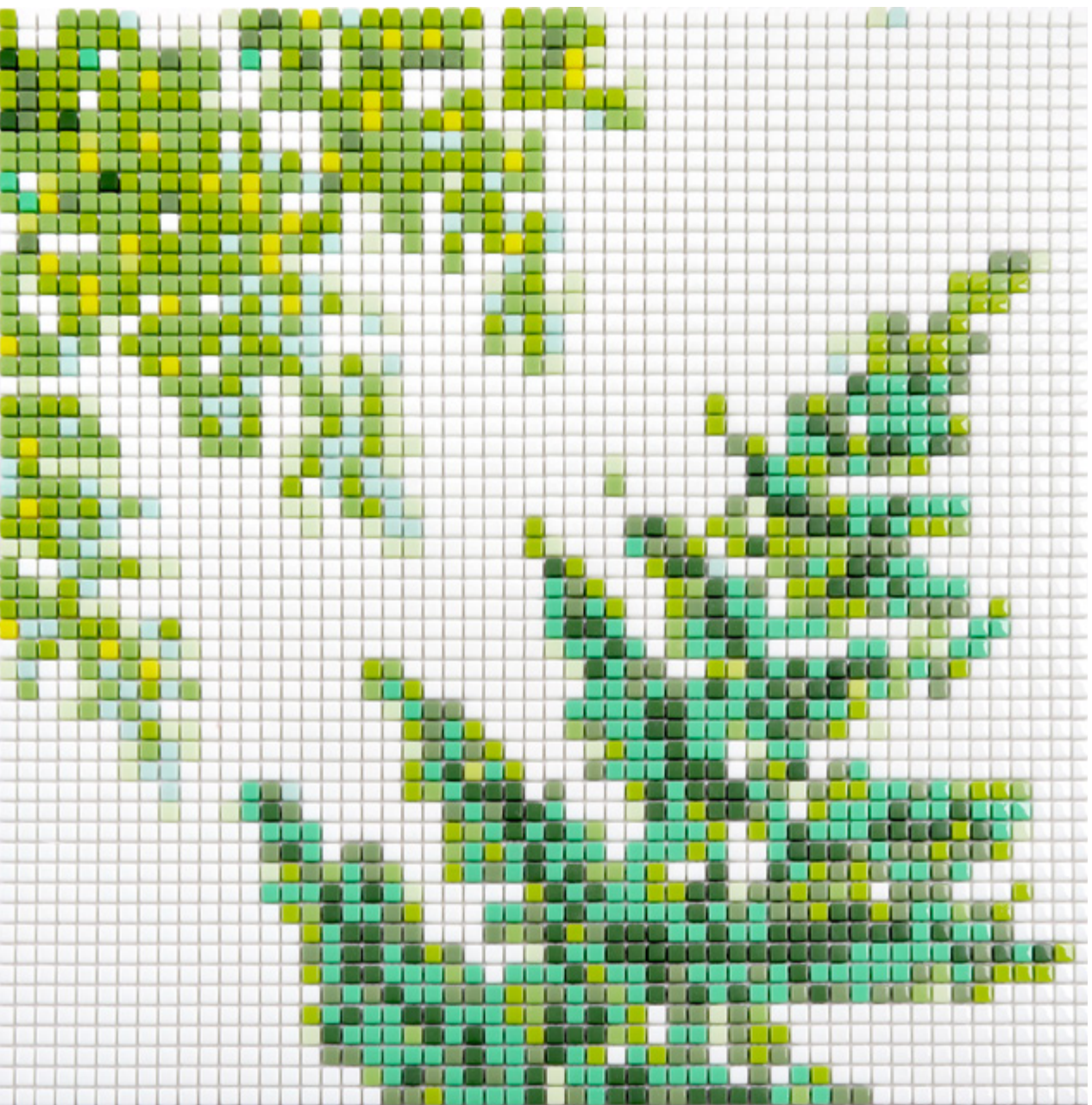
Pixel mosaic is a modern mosaic art where colored glass pieces of a perfect shape are assembled to create the image needed. With Pixel Art, your images and designs are brought to life.



ARTISTIC MOSAIC

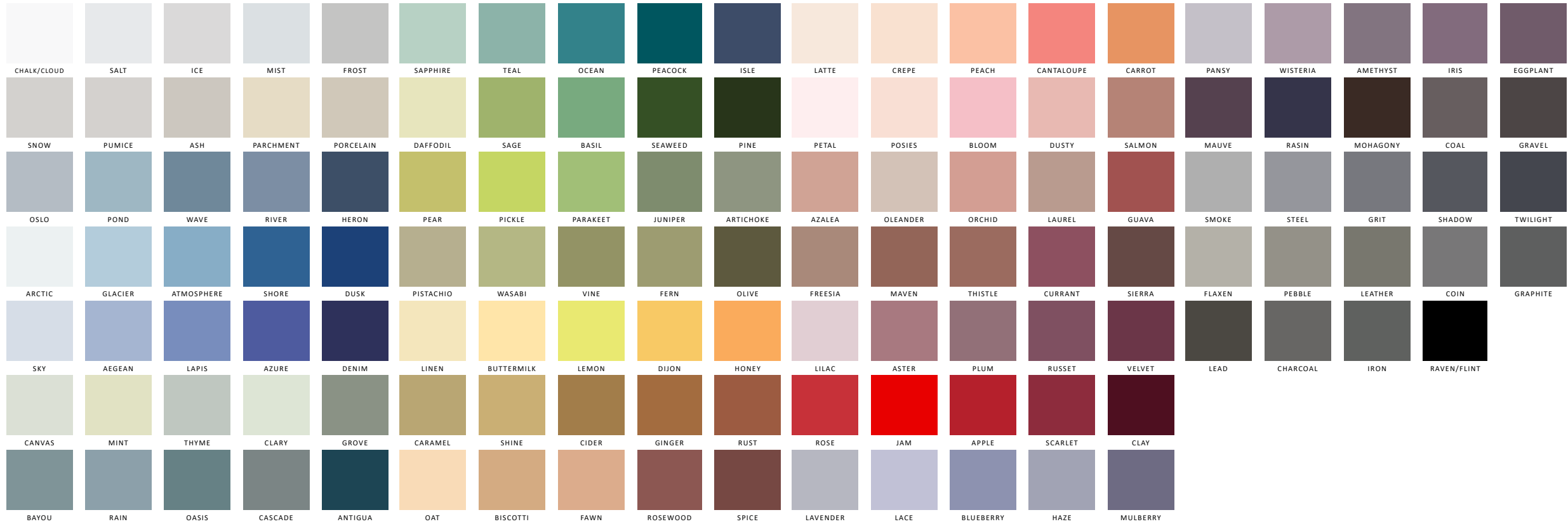


PIXEL ART



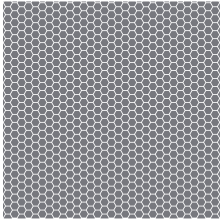
COLOR PALETTE

129 COLOR OPTIONS • MATTE OR POLISHED • COLOR BLEND PATTERN OPTIONS

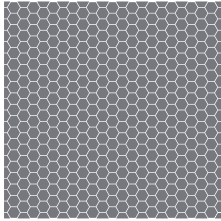


SPECIAL ORDER SHAPES

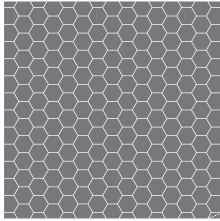
60 SHAPES • RECTIFIED CAST & NON_RECTIFIED CAST RECYCLED GLASS



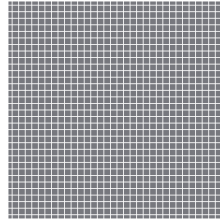
H1 3/8" HEXAGON



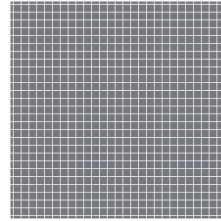
H2 5/8" HEXAGON



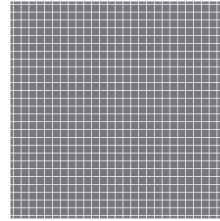
H3 7/8" HEXAGON



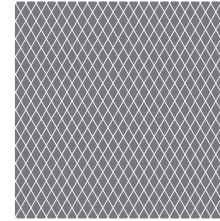
S1 1/4" SQUARE



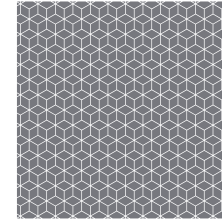
S2 3/8" SQUARE



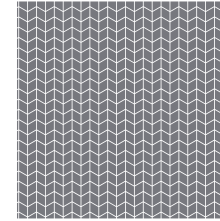
S3 1/2" SQUARE



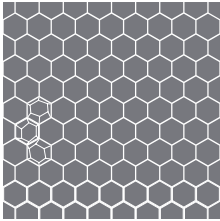
D3 1/2" X 3/4" DIAMOND



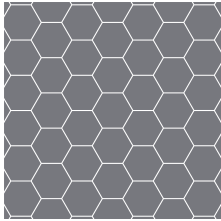
D1 1/2" X 3/4" HEXAGON DIAMOND



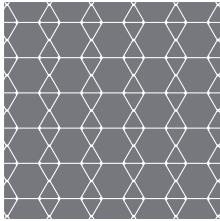
D2 1/2" X 3/4" CHEVRON DIAMOND



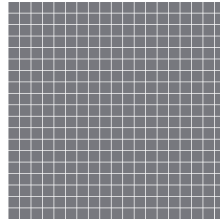
H5 1-1/4" 3D HEXAGON



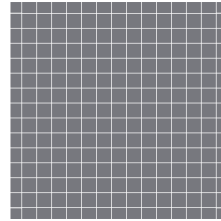
H4 1-7/8" HEXAGON



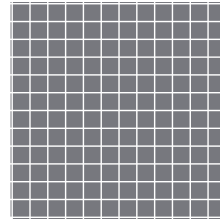
H6 1-7/8" HEXAGON & TRIANGLE



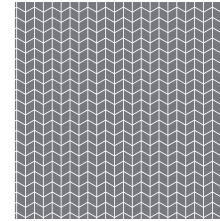
S4 5/8" SQUARE



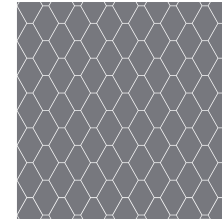
S7 3/4" SQUARE



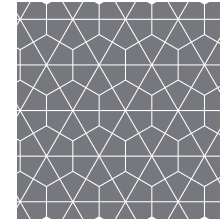
S6 7/8" SQUARE



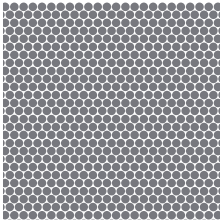
D4 15/16" X 1-7/8" DIAMOND



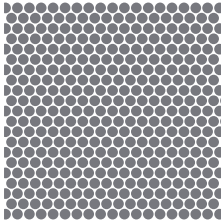
D5 1-3/4" X 1-7/8" DIAMOND



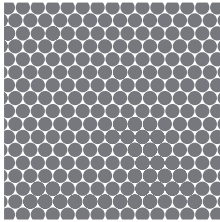
D6 1-3/4" X 1-1/2" DIAMOND



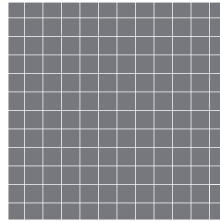
C1 1/2" CIRCLE



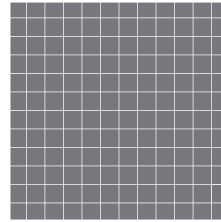
C2 5/8" CIRCLE



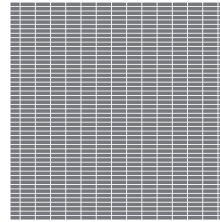
C3 3/4" CIRCLE



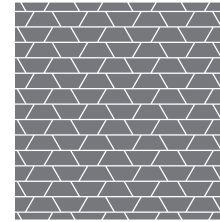
S8 1" SQUARE



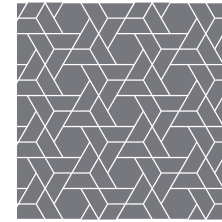
S5 1-7/8" SQUARE



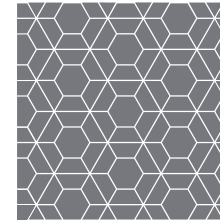
R9 1/4" X 3/4" BRICK



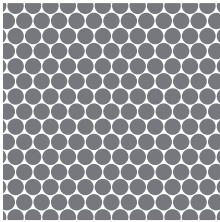
T1 3/4" X 1-7/8" TRAPEZIUM



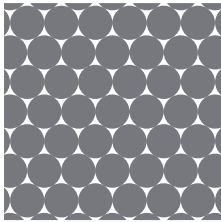
T2 3/4" X 1-7/8" WEAVE TRAPEZIUM



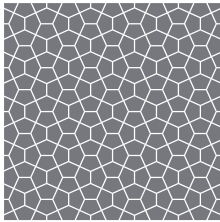
T3 3/4" X 1-7/8" HEX TRAPEZIUM



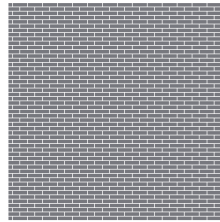
C4 7/8" CIRCLE



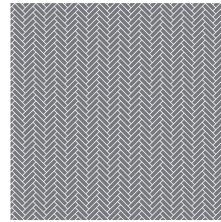
C5 1-7/8" CIRCLE



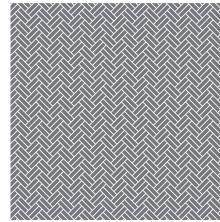
TB1 1" X 3/4" TUMBLER



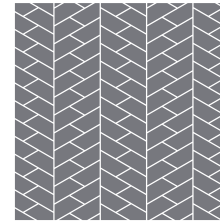
R8 1/4" X 3/4" OFFSET BRICK



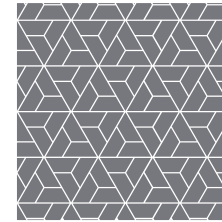
R7 1/4" X 3/4" WEAVE BRICK



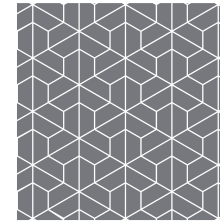
W2 1/4" X 3/4" DOUBLE WEAVE BRICK



T4 3/4" X 1-7/8" CHEVRON TRAPEZIUM



T5 3/4" X 1-7/8" TRIANGLE TRAPEZIUM

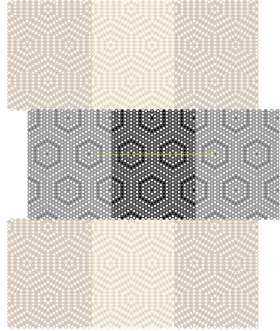


T6 3/4" X 1-7/8" STAR TRAPEZIUM

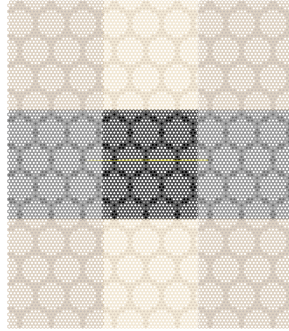
PATTERN DIAGRAMS

It is strongly suggested to dry fit all inlays before applying thin set.
Review pattern diagrams prior to installation; This will help to view each
pattern in the inlay space available & catch any possible mistakes.

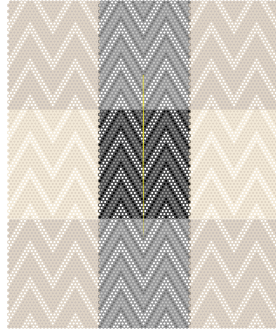
BELFORT



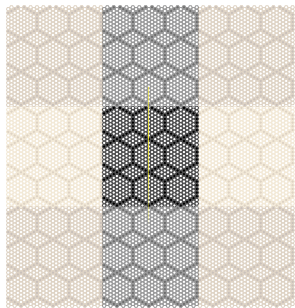
BOURGES



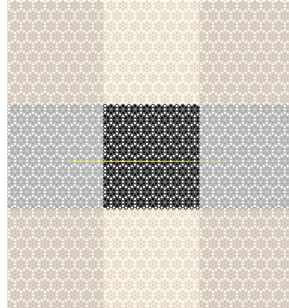
AMIENS



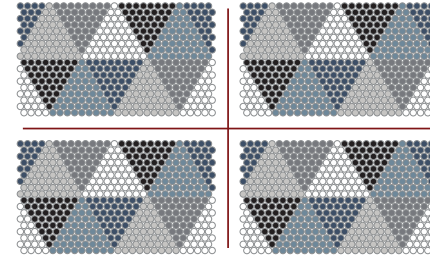
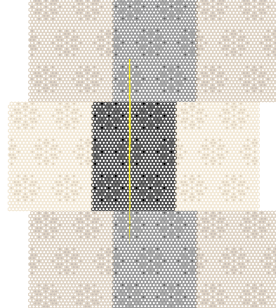
TULLE



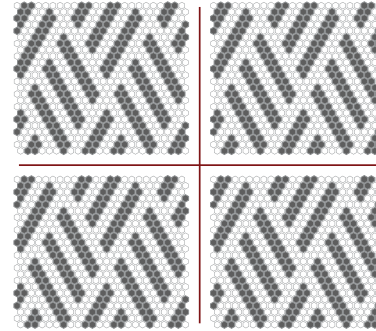
DIJON



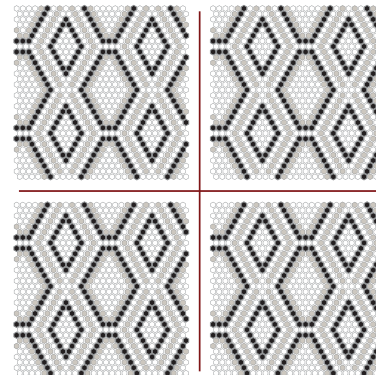
BAYEUX



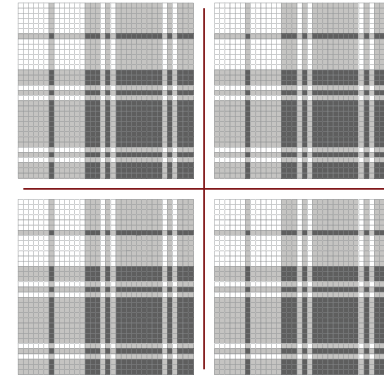
HYGGE



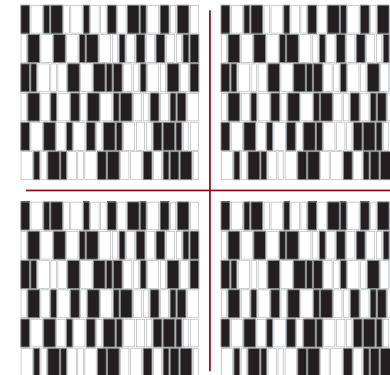
MISSONI



PYTHON



HIGHLAND



BARCODE

SETTING SYSTEMS

All materials should be used according to manufacturer’s instructions. If the mosaic includes glass tiles, please note that due to the translucent nature of glass, the color of the bonding material will impact the ultimate look of the tile. We recommend the use of specific white bonding mortars; some mixed with specific latex admix.

See the following list for required thin-set and follow manufacturer’s recommended cure times for all setting materials. Pools, spas and all submerged applications require a minimum 21-day cure time after grouting and before submersion or exposure to heavy water use.

Although we require the use of highest performing setting materials for installing our products, occasionally, due to the transparent and/or light translucent nature of some of our products, visible effects, also known as “ghosting”, may occur behind glass tiles.

When Mixing Setting and Grouting Materials:

- 1 Measure liquid and powder per manufacturer’s recommendations.
- 2 Machine mixing will provide more consistent results.
- 3 Do not exceed 300 rpm or manufacturer’s recommendations.
- 4 Setting and grouting materials need to slake (set) 10 to 15 minutes after mixing and be remixed before use.

Acceptable Setting Systems (white)

- Custom Building Products: MegaFlex Crack Prevention Mortar
- Custom Building Products: MegaLite Crack Prevention Mortar
- Flextile: 52 Versatile Floor Mortar
- Hydroment ReFlex Ultra-Premium Latex-Modified Thin Set Mortar
- Kerakoll: H40 Tenax Single Component Thin-Set
- Laticrete: 254 Platinum Multipurpose Thin Set Mortar
- Mapei: Adhesilex P10 mixed with Keraply mortar additive
- TEC (H.B. Fuller): Super Flex Premium Performance Universal Latex-Modified Thin-Set Mortar
- FOR METAL (Geometro 2.0): Litokol LitoElastic Epoxy

Unacceptable Setting Systems

- Organic adhesive (mastic) – due to yellowing and low bond strength

Movement Joints

Movement joints are essential for the success of most tile installations. Follow recommendations on Movement Joints EJ171-07 in the “2008 TCA Handbook for Ceramic Tile Installation.” Movement joint requirements will vary depending on substrate, climate and size of installation. An architect or design professional should be consulted when specifying the exact number and location of each movement joint. Saw-tooth joints are not recommended. Certain application may require a different type of sealant.

Acceptable Flexale Joint Fillers

- Hydroment: Chem-Calk 900 One-Part Urethane Sealant
- Kerakoll: Sigibuild PU Poly-Urethane Sealant
- Laticrete: Latasil 100% Silicone
- Silaflex: 1A or 2C Polyurethane-based SealantV

Grout

Install grout mix according to manufacturer’s instructions. Grout should be full and uniformly finished. Due to the impervious quality of glass, the grout will take longer to begin setting-up. For initial cleaning of grout from the tile face, use clean, dry cheesecloth. This wicks additional moisture from the grout and avoids washing out the joints. Use on a clean, damp sponge for the final cleaning and smoothing of the joints. For final polishing of excess haze use a clean, soft cloth.

Acceptable Grouts

- Custom Building Products: Prism SureColor Grout (can go in pools)
- Custom Building Products: Fusion Grout
- Custom Building Products: Polyblend Sanded Tile Grout
- Flextile: 600 Polymer Sanded Floor Grout
- Hydroment: Sanded Ceramic Tile Grout
- Kerakoll: Fugabella 2-12
- Laticrete: 1500 Series Tile Grout or Equivalent
- Mapei: Ker200 Series and Ker700 Series Ultra/Color
- Tec: AccuColor Premium Sanded Tile Grout
- Litokol Starlike (for LeMer)
- Litokol Starlike grout or Customs Prism (for Gunmetal - Geometro 2.0)

An Acrylic grout admix can improve freeze-thaw resistance. Check manufacturer’s recommendations.

Unacceptable Grout

- Non-sanded grout – due to shrinkage
- Consult grout manufacturers before considering blue, green or red grout in submerged applications.

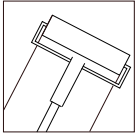
Anti-Fracture/Waterproofing Membranes

- Aquafin 1K and 2K/M: Cementitious waterproofing system
- Custom Building products: RedGard Waterproofing and Crack Prevention Membrane
- Hydroment: Gold Anti-fracture and waterproofing membrane
- Laticrete: 9235 waterproof & anitfracture membrane
- Tec: T1-324 Triple-Flex waterproofing/crack isolation membrane
- Xypex: Concentrate

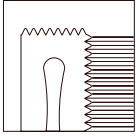
We do not recommend membranes directly behind the setting material when installing translucent or transparent glass tile.

INSTALLATION GUIDELINES

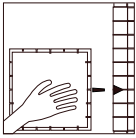
FOLLOW EACH STEP AS DIRECTED FOR BEST RESULTS



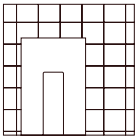
Apply a crack insulation membrane over substrate per the membrane manufacturer's instructions.



Use a V-notch trowel to apply a white glass tile thin-set mortar. Comb notches in one direction.



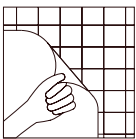
Set sheets into thin-set
*Either face-tape side out or mesh side to the wall.
*Geometro shapes 10mm or above come facetaped. 10mm & below are back mesh mounted.



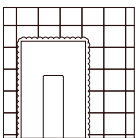
Lightly tap sheets with rubber grout float.



Wait 24 hours (minimum).



Remove film-face and remove excess thin-set from grout joints with a razor knife if necessary.



Apply grout per grout manufacturer's instructions.

APPLICATIONS & SPECS

Tested for hardness and scoring a mohs hardness of 5.5 with excellent resistance to UV, common household chemicals, foot traffic, stains, and frost while delivering a slip resistance of r9.

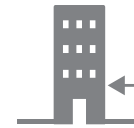
An excellent choice for both vertical & horizontal surfaces, both indoors and outdoors as well as fully submerged pools & spas.



Interior Walls & Floors



Bath Walls/Floors & Steam Rooms



Exterior Walls



Exterior Floors



Full Submersion in Pools & Spas



Linear Thermal Expansion Tested



Abrasion Resistance



Frost Resistance



Chemical Resistance



Eco-Friendly

TEST RESULTS

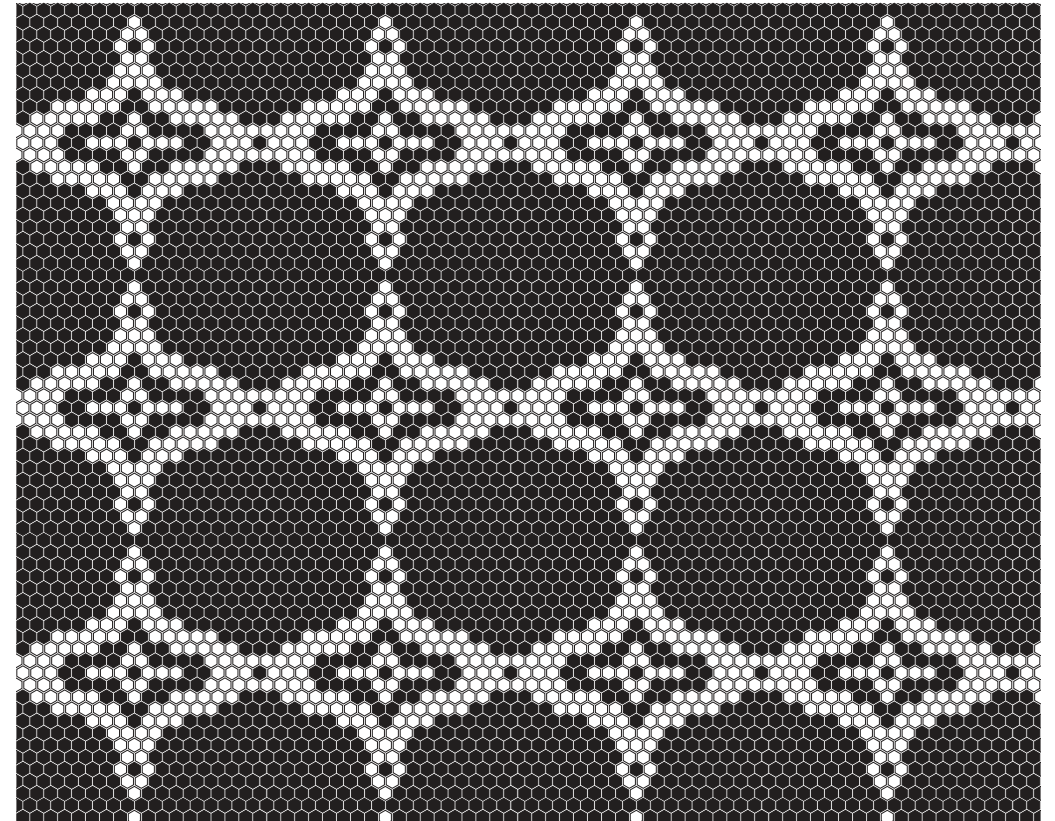
Test Number:	Test Name:	Test Results:
ANSI A137.2-7.6	Mounting Variation	0 Joints out of compliance with ANSI A137.2
ANSI A326.3-2017	DCOF	>.42
ASTM C1895-20	Mohs Scratch Hardness	5
ASTM C1027-19	Visible Abrasion	<1500 Revolutions
ASTM C373-18	Water Absorption	Average 0.0%
ASTM C648-04 (2014)	Breaking Strength	Average 519 lbf
ASTM C650-20	Chemical Resistance	Class A
ASTM C1378-20	Stain Resistance	Class A
ASTM C1026-13 (2018)	Freeze-Thaw	No visible damage after 300 cycles
ANSI A137.2012	Thermal Shock	No visible defects
ASTM C-370 *MODIFIED	Moisture Expansion	0.01%

- Materials Tested Comply with Specifications.
- Materials Tested Did Not Comply with Specifications.
- No Established Criteria for Acceptable Limits.
- For Information Only.

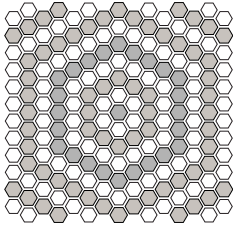
SUSTAINABILITY



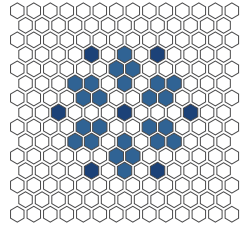
Made from 98% pre-consumer recycled glass
 Tiles are mounted on 96% pre-consumer materials including both the mesh and glue. Lead-Free | Non-Toxic | No VOC off-gassing



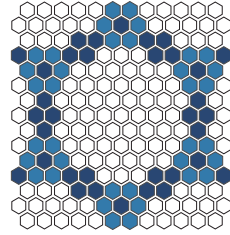
6X6 SAMPLES SWATCHES



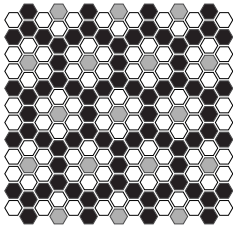
BELFORT



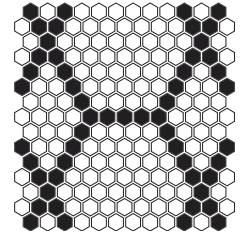
BAYEUX



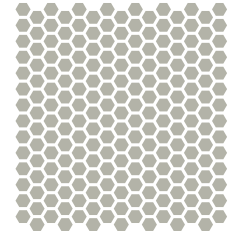
BOURGES



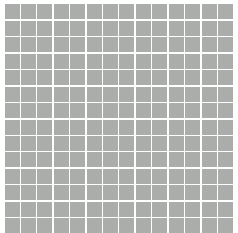
DIJON



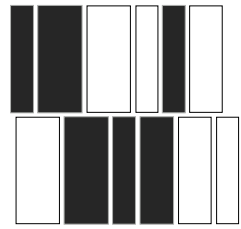
TULLE



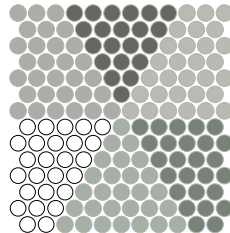
SOLIDS HEXAGON FLAXEN



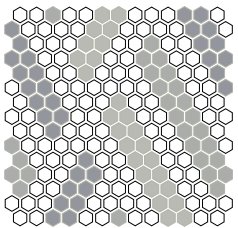
SOLIDS SQUARE FROST



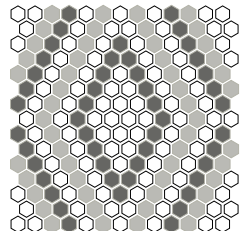
BARCODE



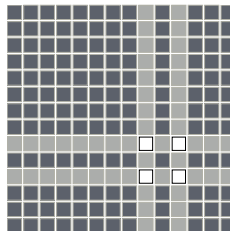
HYGGE



MISSONI



PYTHON



HIGHLAND

GEOMETRO RECYCLED GLASS

Marketing Displays



GEOMETRO CATALOG



GEOMETRO CUSTOM CARTEL



GEOMETRO CUSTOM CARTEL (INTERIOR)

GEOMETRO RECYCLED GLASS

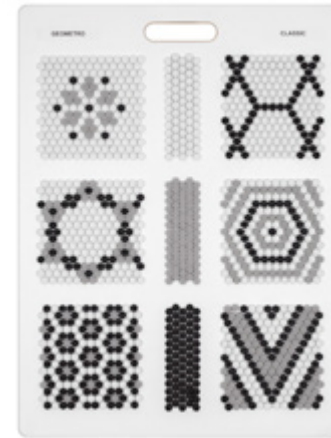
Library Boards



COUNTRY
LBGE04



COASTAL
LBGE06



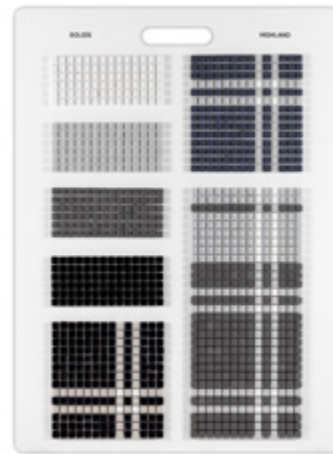
CLASSIC
LBGE05

GEOMETRO RECYCLED GLASS

Library Boards



MISSONI • PYTHON
LBGE01



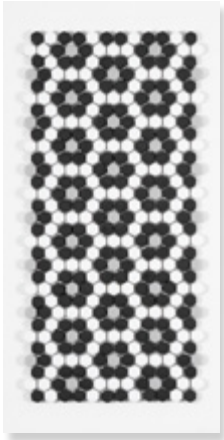
SOLIDS • HIGHLAND
LBGE02



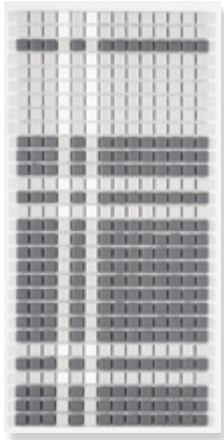
BARCODE • HYGGE
LBGE03

GEOMETRO RECYCLED GLASS

Marketing Displays



DIJON CLASSIC
7X14 ID CARD



HIGHLAND BRISTOL
7X14 ID CARD



OPTION A
Set of (40) 7X14 PVC Display Trays
Geometro Recycled Glass Mosaics
Sheets glue to PVC Trays – No Grout
Includes a White Wooden Box



OPTION B
Set of (40) 7X14 PVC Display Trays
Geometro Recycled Glass Mosaics
Sheets glue to PVC Trays – No Grout
Includes a White Wooden Box
Plus (6) 18X18 Grouted Boards
*Make Individual selections down below



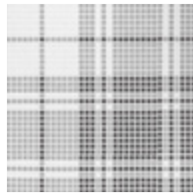
OPTION C
Set of (40) 7X14 PVC Display Trays
Geometro Recycled Glass Mosaics
Sheets glue to PVC Trays – No Grout
Includes a White Wooden Box
Plus (12) 18X18 Grouted Boards
*Make Individual selections down below

GEOMETRO RECYCLED GLASS

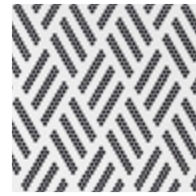
18X18 Grouted Board Displays



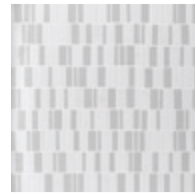
PYTHON HYDRA



HIGHLAND LANCASTER



MISSONI VINTAGE



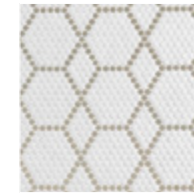
BARCODE PUZZLE



BAYEUX COUNTRY



BOURGES COUNTRY



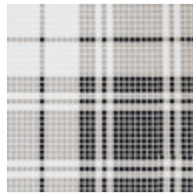
TULLE COUNTRY



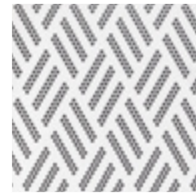
BELFORT COUNTRY



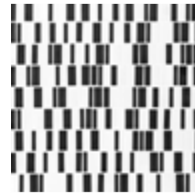
PYTHON DRACO



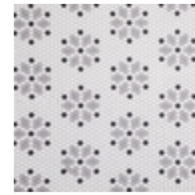
HIGHLAND PRESTON



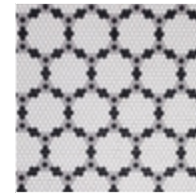
MISSONI ZIP



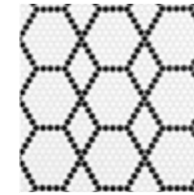
BARCODE CRYPTO



BAYEUX CLASSIC



BOURGES CLASSIC



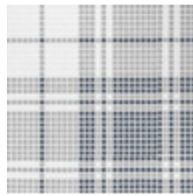
TULLE CLASSIC



BELFORT CLASSIC



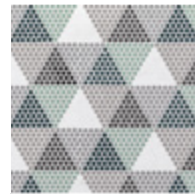
PYTHON HOPI



HIGHLAND BRISTOL



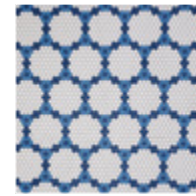
MISSONI RETRO



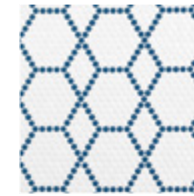
HYGGE LOG



BAYEUX COASTAL



BOURGES COASTAL



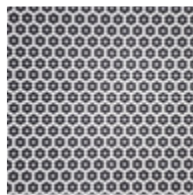
TULLE COASTAL



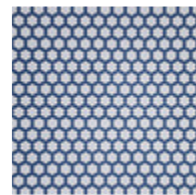
BELFORT COASTAL



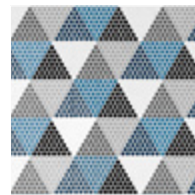
DIJON COUNTRY



DIJON CLASSIC



DIJON COASTAL



HYGGE GLOW



AMIENS COUNTRY



AMIENS CLASSIC



AMIENS COASTAL

GEOMETRO RECYCLED GLASS

Collection

Matte Finish

40 Items / 13 Patterns

APPLICATIONS

Residential, Commercial

Exterior/interior, Floors/walls, Bath Floors/bath Walls, Pools & Spas Full Submersion

ITEM NAME	PART NUMBER	DIMENSIONS	SF/ CASE
PYTHON HYDRA	GLSGEOPYTHHYDR	12-1/8" X 12-1/4"	10.30 SF
PYTHON DRACO	GLSGEOPYTHDRAC	12-1/8" X 12-1/4"	10.30 SF
PYTHON HOPI	GLSGEOPYTHHOPI	12-1/8" X 12-1/4"	10.30 SF
HIGHLAND BRISTOL	GLSGEOHIGHBRIS	15" X 15"	15.60 SF
HIGHLAND PRESTON	GLSGEOHIGHPRES	15" X 15"	15.60 SF
HIGHLAND LANCASTER	GLSGEOHIGHLANC	15" X 15"	15.60 SF
MISSONI RETRO	GLSGEOMISSRETR	9-1/8" X 10-1/2"	6.70 SF
MISSONI ZIP	GLSGEOMISSZIP	9-1/8" X 10-1/2"	6.70 SF
MISSONI VINTAGE	GLSGEOMISSVINT	9-1/8" X 10-1/2"	6.70 SF
HYGGE GLOW	GLSGEOHYGGLOW	7-7/8" X 13-3/4"	7.50 SF
HYGGE LOG	GLSGEOHYGGLOG	7-7/8" X 13-3/4"	7.50 SF
BARCODE CRYPTO	GLSGEOBARCCRYP	11-3/4" X 12"	9.80 SF
BARCODE PUZZLE	GLSGEOBARCPUZZ	11-3/4" X 12"	9.80 SF
SOLID SQUARE CHALK	GLSGEOSOLIDCHALS2	12" X 12"	10.00 SF
SOLID SQUARE FROST	GLSGEOSOLIDFROSS2	12" X 12"	10.00 SF
SOLID SQUARE GRAPHITE	GLSGEOSOLIDGRAPS2	12" X 12"	10.00 SF
SOLID SQUARE RAVEN	GLSGEOSOLIDRAVES2	12" X 12"	10.00 SF

ITEM NAME	PART NUMBER	DIMENSIONS	SF/ CASE
AMIENS COASTAL	GLSGEOAMIENSCOAS	11-3/8" X 13-3/4"	7.63 SF
AMIENS CLASSIC	GLSGEOAMIENSCLAS	11-3/8" X 13-3/4"	7.63 SF
AMIENS COUNTRY	GLSGEOAMIENSCOUN	11-3/8" X 13-3/4"	7.63 SF
BAYEUX COASTAL	GLSGEOBAYEUXCOAS	10-3/8" X 13-1/2"	6.79 SF
BAYEUX CLASSIC	GLSGEOBAYEUXCLAS	10-3/8" X 13-1/2"	6.79 SF
BAYEUX COUNTRY	GLSGEOBAYEUXCOUN	10-3/8" X 13-1/2"	6.79 SF
BELFORT COASTAL	GLSGEOBELFORTCOAS	10-3/4" X 14"	7.35 SF
BELFORT CLASSIC	GLSGEOBELFORTCLAS	10-3/4" X 14"	7.35 SF
BELFORT COUNTRY	GLSGEOBELFORTCOUN	10-3/4" X 14"	7.35 SF
BOURGES COASTAL	GLSGEOBOURGESCOAS	11-13/16" X 13-3/4"	7.91 SF
BOURGES CLASSIC	GLSGEOBOURGESCLAS	11-13/16" X 13-3/4"	7.91 SF
BOURGES COUNTRY	GLSGEOBOURGESCOUN	11-13/16" X 13-3/4"	7.91 SF
DIJON COASTAL	GLSGEODIJONCOAS	12-3/16" X 13-5/16"	7.91SF
DIJON CLASSIC	GLSGEODIJONCLAS	12-3/16" X 13-5/16"	7.91SF
DIJON COUNTRY	GLSGEODIJONCOUN	12-3/16" X 13-5/16"	7.91SF
TULLE COASTAL	GLSGEOTULLECOAS	11-7/16" X 11-13/16"	6.58 SF
TULLE CLASSIC	GLSGEOTULLECLAS	11-7/16" X 11-13/16"	6.58 SF
TULLE COUNTRY	GLSGEOTULLECOUN	11-7/16" X 11-13/16"	6.58 SF
SOLID HEXAGON CLOUD	GLSGEOSOLIDCLOU	11-7/8" X 12-3/16"	7.07 SF
SOLID HEXAGON FLAXEN	GLSGEOSOLIDFLAX	11-7/8" X 12-3/16"	7.07 SF
SOLID HEXAGON SMOKE	GLSGEOSOLIDSMOK	11-7/8" X 12-3/16"	7.07 SF
SOLID HEXAGON DUSK	GLSGEOSOLIDDUSK	11-7/8" X 12-3/16"	7.07 SF
SOLID HEXAGON FLINT	GLSGEOSOLIDFLIN	11-7/8" X 12-3/16"	7.07 SF



NATURAL STONE RESOURCES

EXPORTERS - IMPORTERS - DISTRIBUTORS